



College of Humanities  
and Sciences

OPEN  
HOUSE

13TH  
MAY  
2023

**Professor Victor Tan**  
**Deputy Head**  
**Department of Mathematics**

---

**10 QUESTIONS TO ASK  
IF YOU ARE CHOOSING  
NUS MATH**

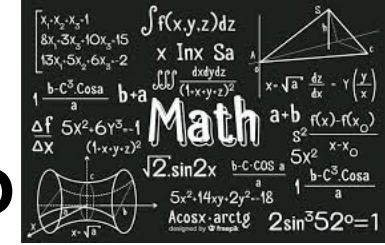
[AskUGmath@nus.edu.sg](mailto:AskUGmath@nus.edu.sg)

+65 6516 2738



# #1. Why NUS Math ?

- NUS Math is #1 in Asia
- Among top 15 in the world
- Many top tier mathematicians in the department
- Many good math professors in the department
- Special Program in Mathematics (SPM)



# #2. What topics will I learn in MA program?

## Essential Courses (8)

## Elective Courses (choose 7)

## Specialization (+ 5 additional)

Year 1

- MA1100 Basic Discrete Mathematics
- MA2001 Linear Algebra I
- MA2002 Calculus

Year 2

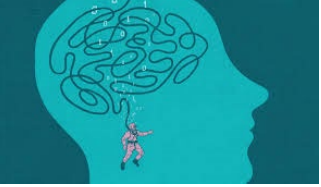
- MA2101 Linear Algebra II
- MA2104 Multivariable Calculus
- MA2108 Mathematical Analysis I
- MA2116 Probability

Year 4

- MA4198 Mathematics Capstone Project

- MA2202 Algebra I
- MA3211 Complex Analysis
- MA3252 Linear and Network Optimization
- MA3259 Mathematical Methods in Genomics
- MA3264 Mathematical Modeling
- MA3265 Introduction to Number Theory
- MA4254 Discrete Optimization
- MA4260 Stochastic Operations Research
- MA4261 Coding and Cryptography
- MA4264 Game Theory
- MA4268 Mathematics for Visual Data Processing
- MA4270 Data Modeling and Computation
- ETC ...

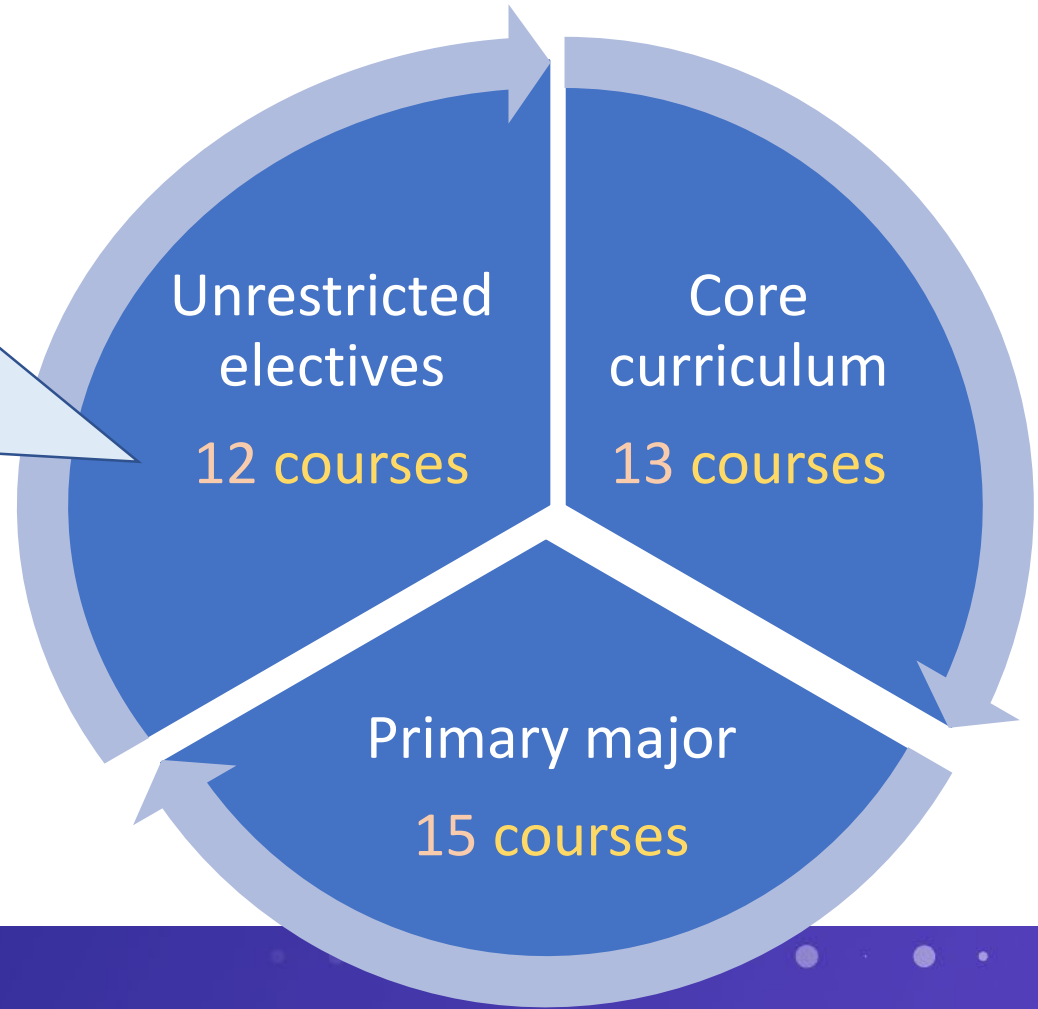
Year 3 & 4



# #3. Will I be able to go deep as math major?

Total 160 units (~ 40 courses)

- 2<sup>nd</sup> major – 10 courses
- Minor – 5 courses
- Specialization – 5 courses
- UROPS
- UTOP
- UPIP
- More maths
- Others





## #4. What is advanced placement test?

- Take a test to be exempted from certain lower level course
- Available courses: MA2001, MA2002
- Eligibility: A grade in H2 (or equivalent) Math or Further Math, and excellent overall results
- Only for CHS freshmen
- Application: Apr 28 – May 26
- Test dates: MA2001 (Jun 21); MA2002 (Jun 22)
- Admin fee \$54 per course



# #5. Is SPM suitable for me?

- Students with very strong passion and aptitude in math
- Students who intend to go for graduate schools
- Students with good grades in:

MA1100T (enter SPM in Sem 2 of their first year)

MA1100 & MA2001 & MA2002 (enter program in Sem 1 of their second year)

## What's for the students?

Take the more challenging S-version courses

In-depth study and rigorous training

Close mentorship



# #6. Should I choose a second major?

- If you want to formally engage in multi-disciplinary studies
- If the second major enhance your career prospect
- If the two majors complement each other
- If you are simply passionate in another subject

## What if I am not sure?

- Try out various Gateway/intro courses
- Start with a minor and upgrade to second major
- Start with a second major and downgrade to minor

## Mathematics with ...

- Statistics
- Economics
- Computing
- Engineering
- Physics
- Business
- Many others

# #7. How difficult is the MA program?

- Not just about computation
- Emphasize on understanding concepts
- Start from first principle
- Logical and rigorous argument

The program is **not easy** BUT it is **rewarding!**

- ❖ Problem Solving
- ❖ Quantitative Reasoning
- ❖ Analytical Thinking
- ❖ Rigorous & Systematic
- ❖ Perseverance
- ❖ Life Long Learning





# #8. How do I prepare ahead for the courses?



- Enjoy the break!
- Revise some relevant A level topics on Sets, Functions, Calculus, Linear algebra etc
- Take a look at the lecture notes for MA1100, MA2001, MA2002
- Search online for any introductory textbooks/courses on
  - Fundamentals of Mathematics
  - Elementary Calculus
  - Elementary Linear Algebra



# #9. How does NUS prepare me for my career?

- Centre for Future-Ready Graduates (CFG)
- Career advice
- Career Booster workshops
- Job and internship opportunities

 Emily Tan | [dsa1@groups.nus.edu.sg](mailto:dsa1@groups.nus.edu.sg); [dsa2@groups.nus.edu.sg](mailto:dsa2@groups.nus.edu.sg); [dsa3@groups.nus.edu.sg](mailto:dsa3@groups.nus.edu.sg); [dsa4@groups.nus.edu.sg](mailto:dsa4@groups.nus.edu.sg); + 20 ▾

[Internships & Jobs] 29 Mar 2022: Public Sector, Consumer Goods, Engineering, Healthcare, Logistics and Transportation

[NUS Confidential]



The banner features the CFG logo on the left, followed by the NUS logo and the text 'Centre for Future-ready Graduates' on the right.

Hello DSA, Stats, Applied Maths, Maths & QF students,

This week we are sharing with you job opportunities, career and competition events to attend in the **Public**

# #10. Will I get any support from NUS staff?



## Academic mentorship

- A mentor (math professor) will be assigned to every MA student
- Help students adapt to uni life
- Provide general academic/career guidance and pastor care
- Point them to the available resources
- Cultivate a caring environment for students



# PROSP

# ES

Home » Undergraduate Programmes » Prospective

- Prospective Undergraduates ▾
  - Career Prospects
  - Frequently Asked Questions
  - Advanced Placement Credits Test
  - Candidates without H2 Maths
  - MA1301 Proficiency Test
- Major & Minor Programmes ▾
- Double Degree with Computer Science
- Special Programme in Mathematics
- Honours Year Project ▾
- Other Opportunities ▾
- Maths Clinic
- Undergraduate Advisors
- Career Advisory [↗](#)
- Graduation [↗](#)

- Career Prospects
- Frequently Asked Questions
- Advanced Placement Credits Test
- Candidates without H2 Maths/F.Maths (or equiv)
- MA1301 Proficiency Test